



Alanna Dean
Independent Travel Advisor
Tourworld Travel Company

1-778-383-6369
alanna.dean@envoyage.ca
<https://www.tourworld.ca>



Antarctica, South Georgia, and the Falklands

Feb, Oct-Nov 2025 From \$26,304 to \$79,698 USD per person

Tour can be done in reverse, as well. Tour can vary depending on local climate conditions.

Price is for the cruise package, excluding flights, as described and is subject to availability.

Price is per person, double occupancy.

Information & Documents



Carrier: Lindblad Expeditions

One of the grandest wild experiences the planet offers

The ultimate Southern Ocean experience, this South Georgia Island cruise expedition takes you into majestically spectacular wildness. Not even the vast migrations of Africa can rival the awesomeness of seeing a king penguin colony of tens of thousands individuals stretching as far as the eye can see. Or albatross colonies that fill the windward edges of the remote islands they call home. You'll have other rare sightings here too: massive, in both senses of the word, herds of elephant seals; and a wandering albatross stretching its 11-foot wings. It's the impossible beauty of an Antarctica trip exponentially increased by unimaginable numbers of animals. A not-to-be-missed polar experience, for those with the luxury of time.

For most travelers, visiting Antarctica is a once-in-a-lifetime experience. So, for those with the luxury of time, including the Falklands and South Georgia Island cruise just makes sense. And makes for a genuine experience-of-a-lifetime. This voyage has it all.

- The impossible beauty of Antarctic ice: tabular bergs, the haunting Lemaire Channel
- Massive wildlife spectacles in South Georgia and the Falklands
- Three distinct regions to experience
- Superlative photos ops and on-board photo assistance
- Lindblad-National Geographic expedition team to illuminate it all



About National Geographic - Lindblad

The partnership between National Geographic and Lindblad has initiated and continues to develop multiple channels of environmental stewardship in:

Education

Ships in the National Geographic-Lindblad Expeditions fleet are a platform for scientific exploration and knowledge. While exploring some of the wildest places on Earth, the fleet brings travelers face-to-face with nature and gives them the opportunity to contribute to scientific endeavors above and below the water.

Select voyages invite scientists aboard to share firsthand knowledge and expertise with guests.

Ng-LEx offers the Grosvenor Teacher Fellowship, a professional learning opportunity for pre-K–12 educators. Educators selected for the fellowship travel aboard an expedition for a life-changing, field-based experience and deepen their expertise on how to increase geographic awareness in their classrooms, schools, and communities.

Operations

Ng-LEx is committed to the elimination of single-use plastics across their fleet. As of today, all ships are 100 % free of single-use plastic bottles, cups, straws and stirrers.

Purchasing fresh, local food whenever possible contributes to the economic viability of local communities. Using a holistic approach, every species used for food is assessed to ensure that only the most sustainable options are served, with the aim of keeping the ocean healthy and fish stocks replenished.

Conservation

Together with their guests, Lindblad supports projects that protect wildlife, engage communities, and promote locally-driven solutions to marine and coastal challenges. From supporting ocean-focused programs which seek to inspire the creation of marine protected areas, to giving the next generation of conservation heroes a chance to lead compelling field-based projects, travelers have an opportunity to be inspired and join efforts to make a difference.

Local Communities

Ng-LEx helps bolster local communities by supporting local artisans through an Artisan Fund supporting communities around the world. Launched in 2007, our Artisan Fund helps empower artisan communities by offering training programs, supplying workspaces and equipment, issuing grants for local projects benefiting artisans, and educating shipboard guests on the value of buying handmade goods. Because when you buy artisanal handcrafts, you're not only acquiring an object of quality and beauty, but you're also making a difference in an artisan's life.

Day 1



Buenos Aires, Argentina, or Santiago, Chile

Arrive in Buenos Aires, the cosmopolitan capital of Argentina, or Santiago, Chile's mountainous capital.

Transfer from the airport to the Alvear Icon, or similar (*National Geographic Endurance*).

Or transfer to the Ritz-Carlton, Santiago, or similar (*National Geographic Resolution*).

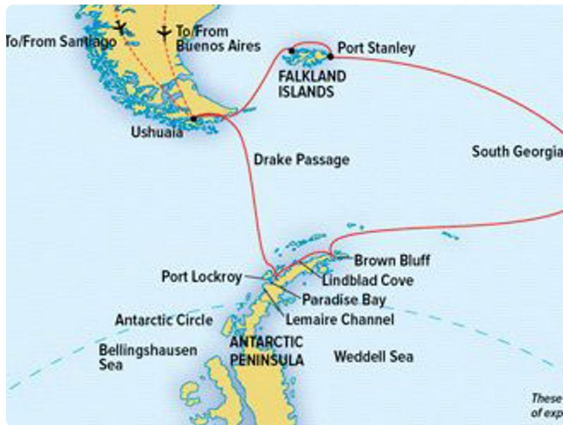
Arrival Time: Arrive before 11:30 a.m. local time.

Arrival City: Buenos Aires, Argentina or Santiago, Chile

Ship Information Originally constructed for service along Norway's coast as part of the famed Hurtigruten, or Coastal Express, she ferried passengers among the fjords of this iconic coast in conditions that could deteriorate into heavy seas in a matter of minutes. She had to be able to handle deep swells and towering waves—and have a high degree of maneuverability. Those traits, and an ideal size, made her a natural choice for addition to the Lindblad fleet.

The plans to completely rebuild her drew on 50 years of pioneering expedition history and expertise. National Geographic Explorer was equipped with an ice-strengthened hull and advanced navigation equipment for polar expeditions; a roster of tools for exploration; and a well-appointed interior with vast expanses of glass for an unprecedented connection to the environment. Her interior and exterior design embodied the Lindblad expedition ethos—the privilege of wildness and the luxury of comfort.

For many guests she remains their paradigm of an expedition ship. She is devoted to exploration—from her Welcoming Bridge, and the Chart Room below it where you can tuck in to warm up with a hot chocolate, to her high-perched Observation deck with its aqueous light and compelling 24/7 views. Even the art on the walls—from the Hurley prints of Shackleton's expedition to the stunning National Geographic photos—tells an uber-narrative of globe-spanning travel and a dedication to curiosity and wonder.



Buenos Aires

Day 2



Ushuaia

Today we fly south to Ushuaia, the southernmost city in the world, where we meet our ship. Ushuaia's spectacular setting, between the jagged peaks of the Darwin Range and the protected waters of the Beagle Channel, makes it an appropriately wild place to begin our journey to the White Continent and a great destination in its own right. While we're there, we visit Tierra del Fuego National Park. Lunch will be served onboard a private catamaran while cruising the Beagle Channel, where we'll be on the lookout for huge South American sea lions and birds like imperial cormorants.

We can advise you on the most appropriate flights to take; however, they are not included in the price.



Ushuaia

Day 3



At Sea

Settle into shipboard life as we sail to the Falkland Islands. Keep a lookout for albatross that glide alongside the ship.

Days 4-6



Falkland Islands - South America

Everything we love about expedition travel seems to come together in the western Falkland Islands. Where else can you land on a beach tucked into a rocky cove, hike out across a rolling green pasture, and suddenly find yourself at the crest of a sea cliff looking out over the South Atlantic surf? Just a few steps further and you're standing at the edge of a breeding colony of black-browed albatross, so close that you can hear the wind on their wings as they swoop in to land beside you. Check out the thousands of irresistible gentoo, rockhopper, and Magellanic penguins that congregate here, along with fur seals.

Stanley, the bright, pretty capital of the Falkland Islands, is a wonderfully unexpected place: a charming outpost of British culture tucked into a small bay on the shore of these windswept islands in the far South Atlantic. Many Falkland Islanders still live in very traditional ways, and we'll have a chance to visit a small farm to see some expert sheep shearing and learn about the best techniques for cutting blocks of peat for the fire. The rocky hills and white sand beaches outside town offer some excellent hikes, and afterward, a cup of tea or a pint at the local tavern goes down very nicely.

Days 7-8



At Sea

With whales beneath and birds above, we continue toward South Georgia Island. Our naturalists will prepare us for the exciting days ahead with presentations on the wildlife of South Georgia, and, of course, the inspiring story of Sir Ernest Shackleton and the *Endurance*.

Days 9-13



South Georgia - South America

Simply put, there is nowhere else in the world like South Georgia. King penguins, the second largest species in the world, are unquestionably the most iconic wildlife of South Georgia. Exact numbers are not known, but the largest single colony on the island may have as many as 500,000 of these amazing birds nesting together on a single two-mile-long beach.

Explore the spectacular coastline of South Georgia Island. In keeping with the nature of an expedition, our schedule is flexible with opportunities for walking, hiking, kayaking, and Zodiac excursions. Sailing along the coast, we plan to offer activities every day including visits to Grytviken—the final resting place of Shackleton—and Stromness Harbour, where Ernest Shackleton, Tom Crean, and Frank Worsley finally reached aid at a whaling station.

The island is also home to huge elephant seals and thousands of king penguins. South Georgia is sometimes called “the Serengeti of the Southern Ocean”, but even that description seems inadequate; this lonely island is unique in the world, so rich and so beautiful that it defies any comparison.



South Georgia - South America

Days 14-15



At Sea

As we voyage, head up to the Bridge to watch for icebergs and observe expert navigation at work as our skilled Captain and officers sail these historic waters. There'll also be time to enjoy a massage in the wellness center, work out in the gym, and browse in the library. Each day our naturalists offer talks that add depth to your experience.

Days 16-19



Antarctica

With long hours of daylight at this time of year, we have ample opportunities to explore. Our schedule is flexible, allowing us to take advantage of the unexpected. We might set out by kayak to encounter towering icebergs at water level; embark on a Zodiac excursion in search of seals and blue-eyed shags; walk amid thousands of Adélie and gentoo penguins; or experience the thrill of the ship crunching through pack ice. Everywhere we go in Antarctica we're surrounded by opportunities to capture uniquely beautiful images. Along the way our expert expedition team will enrich our experiences.



Antarctica

Days 20-21



At Sea

This 500-mile-wide strait between the Antarctic Peninsula and South America is one of the most famous bodies of water in the world. Sometimes ferocious, sometimes flat calm, the Drake is always a fascinating place in its own right. This part of the journey is our best opportunity to see gorgeous seabirds like the wandering albatross, and we might be lucky enough to encounter orca whales or rare species of dolphins. Visit the Bridge (a great place to spot wildlife), have a relaxing massage, attend a talk about the biology of the penguins you've just seen, or settle into a comfy chair in the observation lounge to look out over the waves and reflect on your incredible journey. Toast our epic voyage at a festive farewell dinner.

Day 22



Ushuaia

Disembark in Ushuaia, and fly by charter to Buenos Aires (*National Geographic Explorer / National Geographic Endurance*) or Santiago (*National Geographic Resolution*), then transfer to the airport for your flight home.

Departure Time: Depart after 9:00 p.m. local time.

Departure City: Buenos Aires, Argentina, or Santiago, Chile



Ushuaia